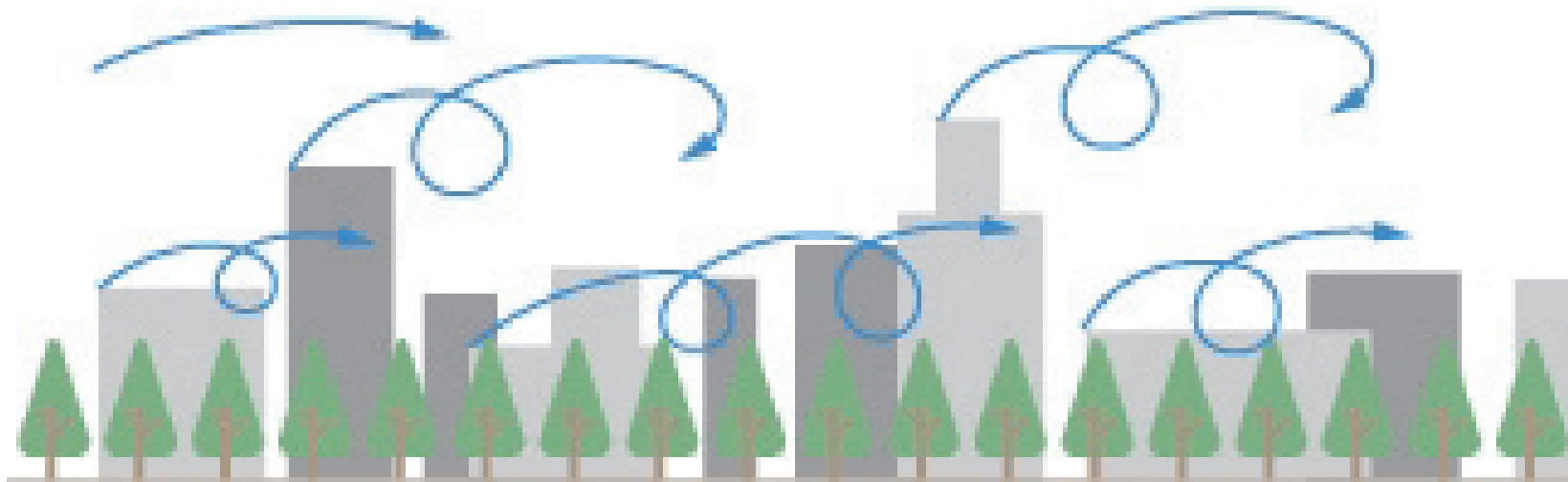


AzumiA

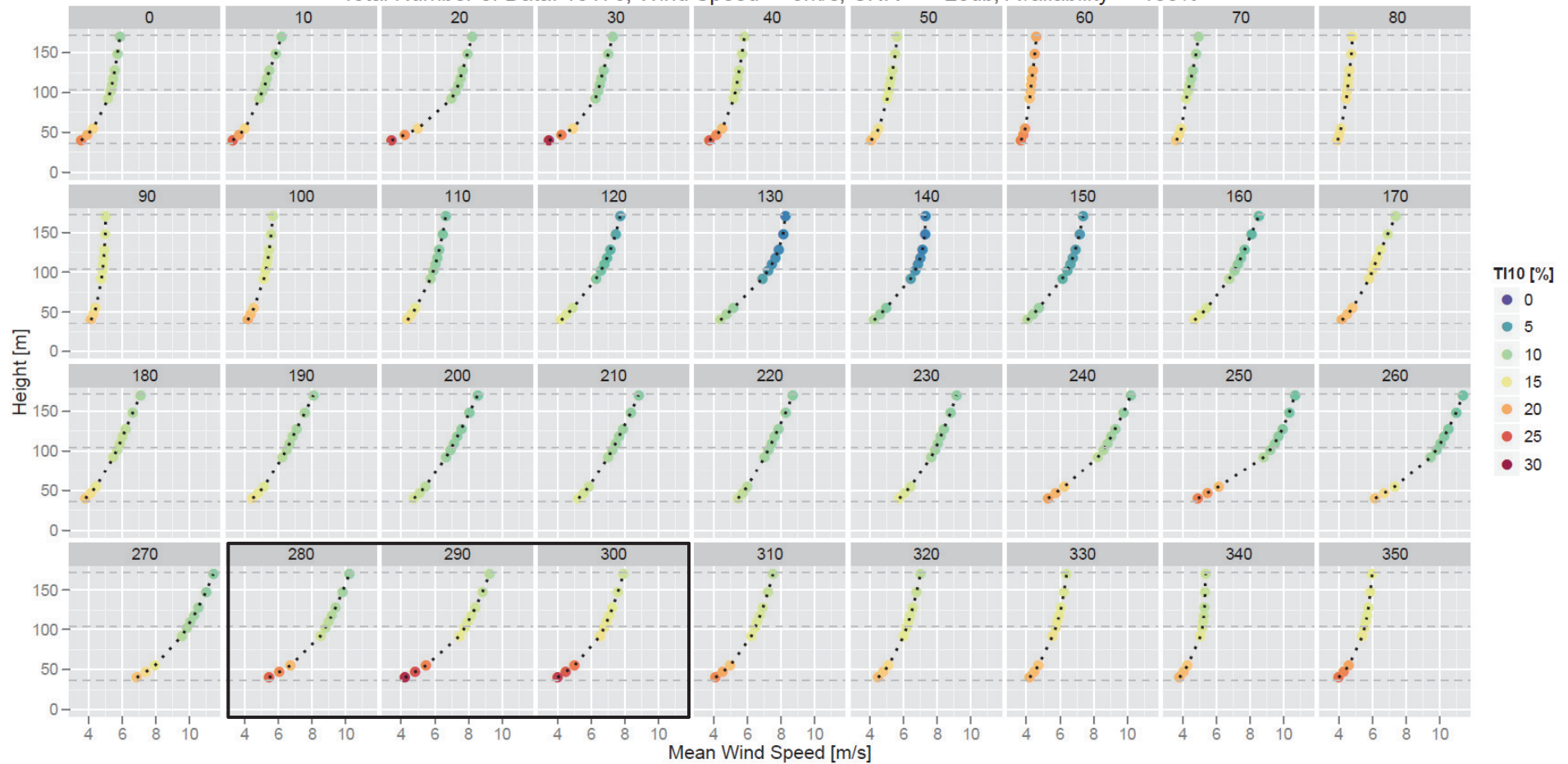


Complex Terrain is like building arrays.

The undulating topography can lead to the onset of turbulence.

### Wind Shear Profile with TI

Data Period: 2023-12-05 14:10 – 2024-07-13 10:00, Wind Direction Ch13\_100m  
Total Number of Data: 13176, Wind Speed  $\geq 3\text{m/s}$ , CNR  $\geq -20\text{db}$ , Availability  $\geq 100\%$



Complex topography presented in the upstream wind direction 280 to 300 degrees.  
High turbulence recorded at lower heights led to a reduction of mean wind speed and thereby affecting the wind shear.