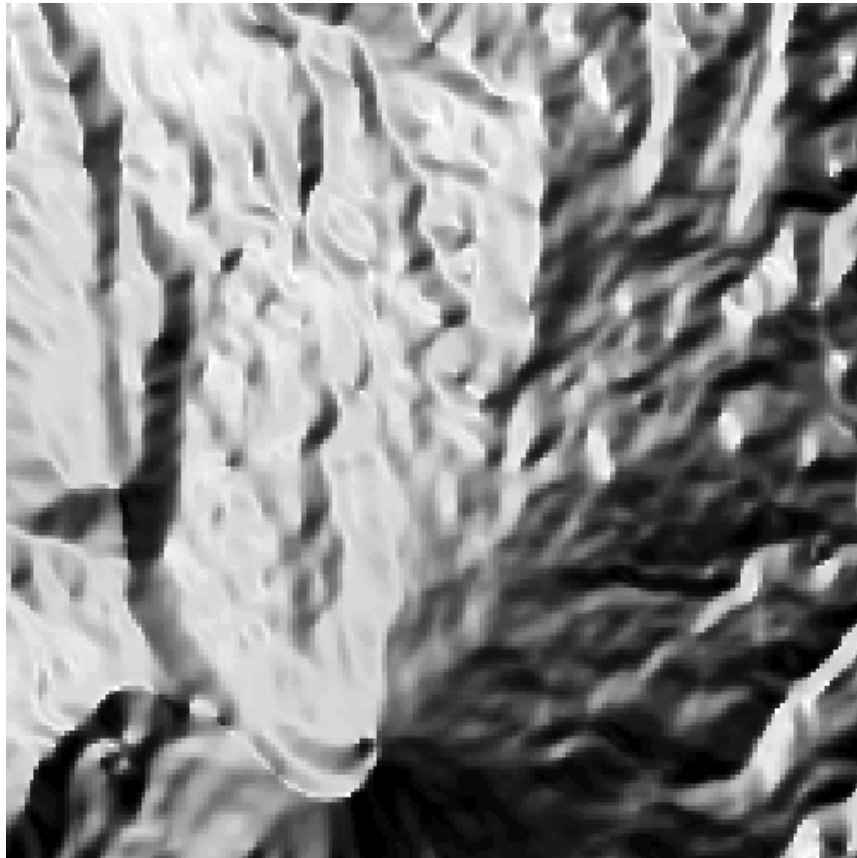


AzumiA



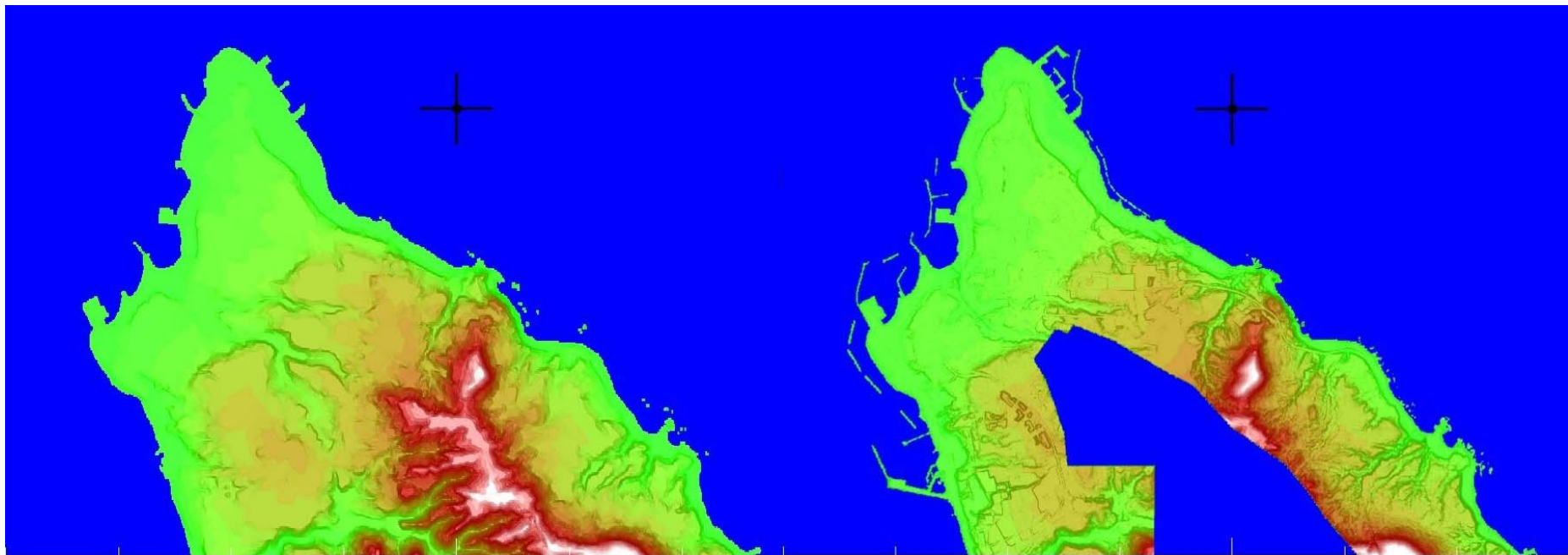
50m Mesh **DEM50**



10m Mesh **DEM10B**

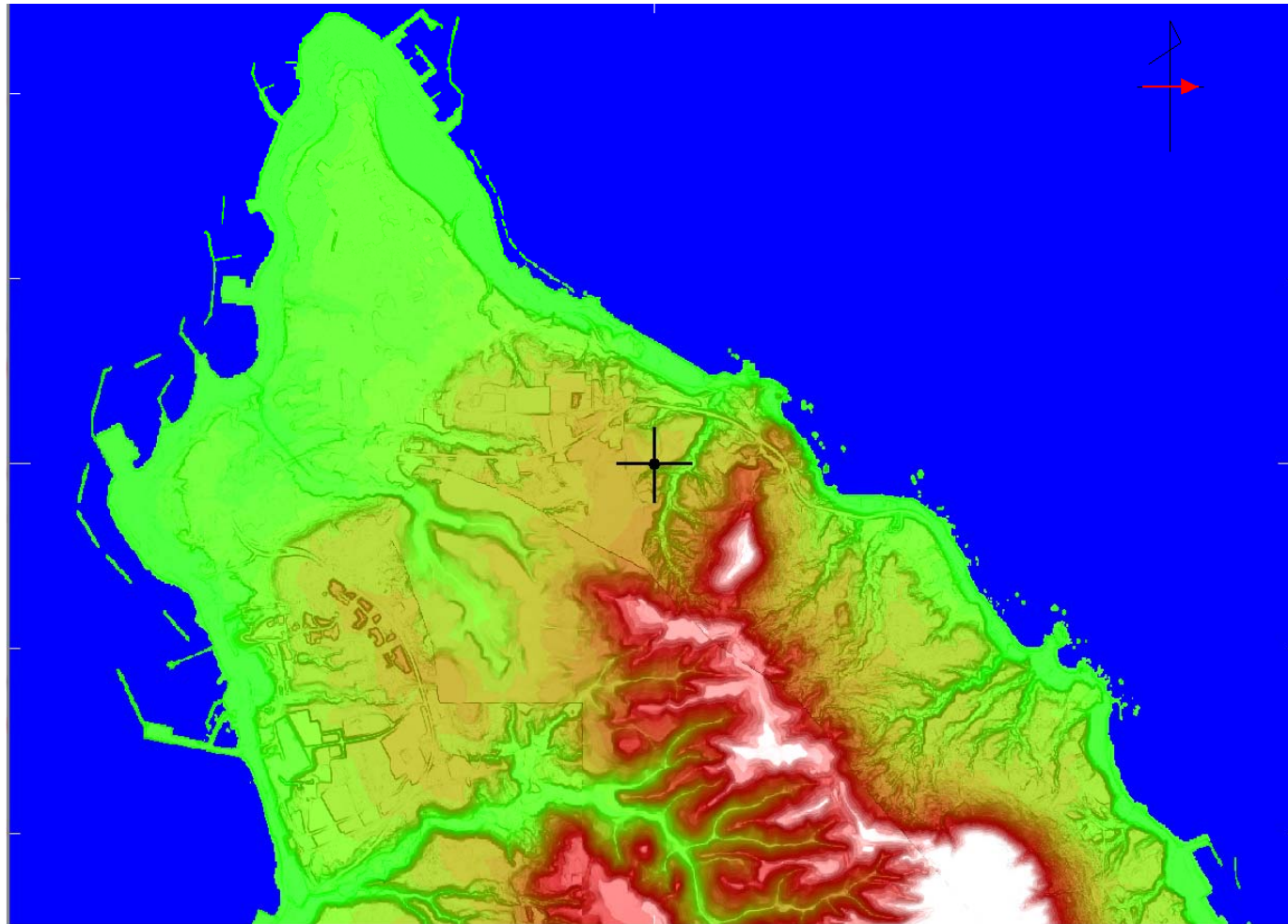
Accuracy  
(standard deviation)

データ ソース	測量方法等	標高点格子の間隔	標高精度 (標準偏差)
DEM5A	航空レーザ測量	0.2" × 0.2" (約 5m 四方)	0.3m 以内 <sup>※2</sup>
DEM10B <sup>※1</sup>	1/2.5 万地形図等高線	0.4" × 0.4" (約 10m 四方)	5.0m 以内

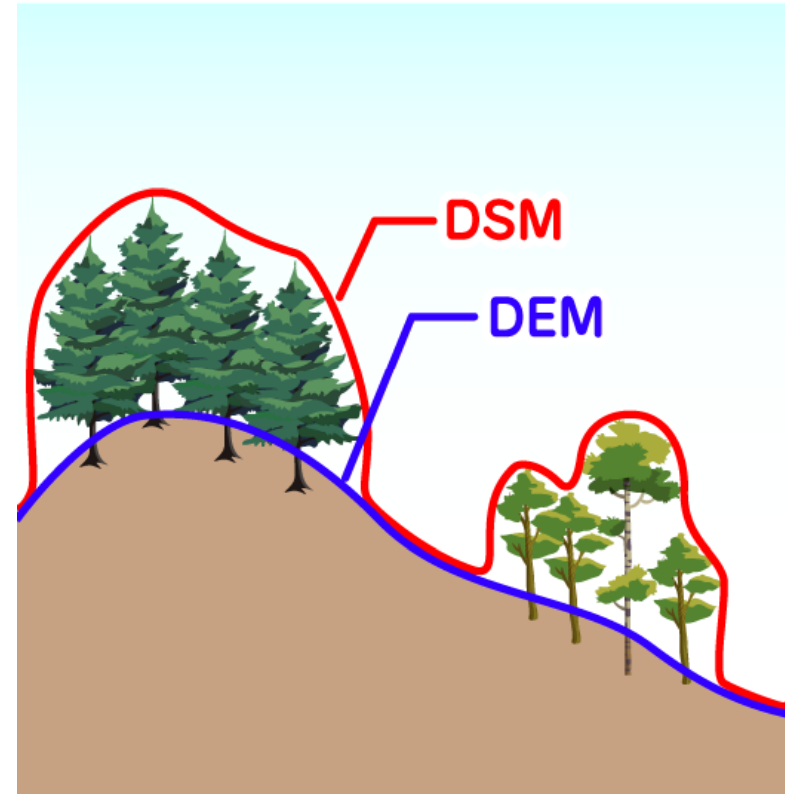
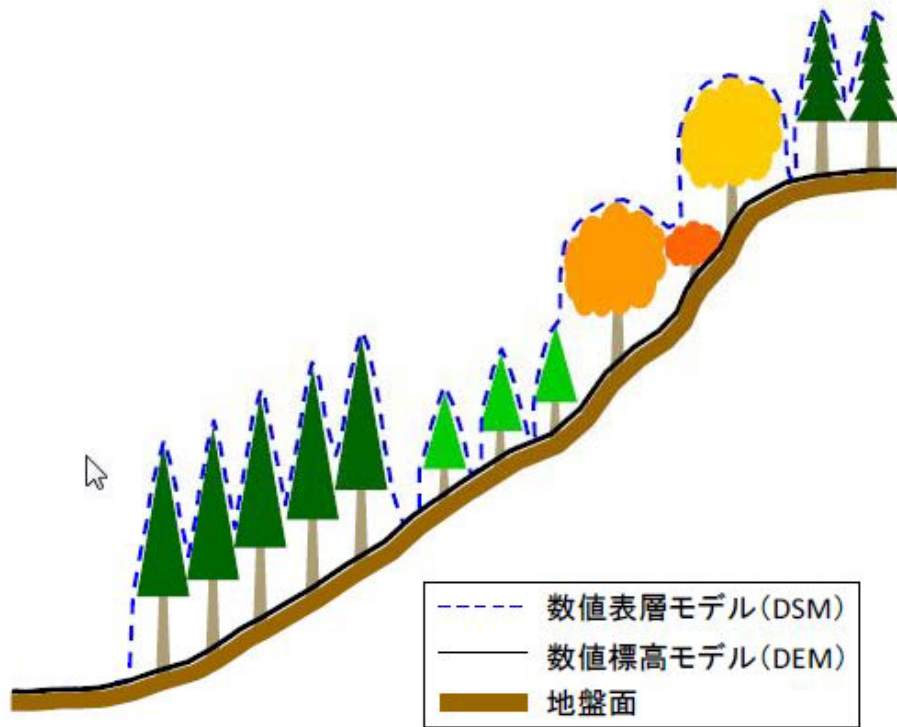


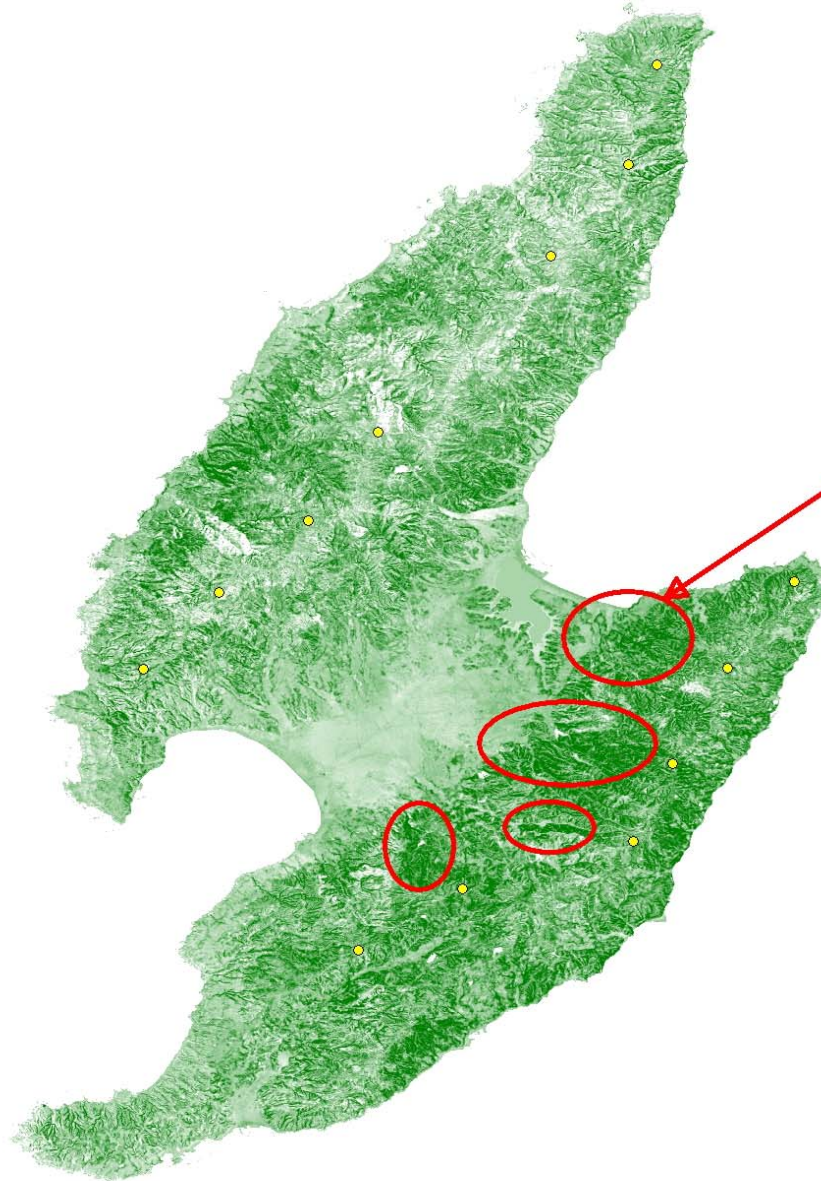
10m Mesh **DEM10B**

5m Mesh **DEM5A**



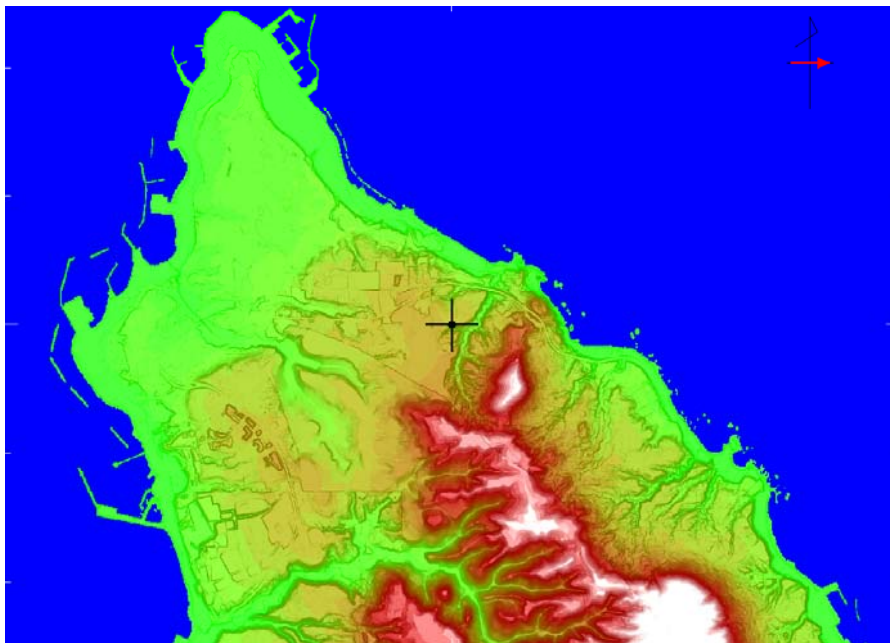
DEM10B + DEM5A Combined



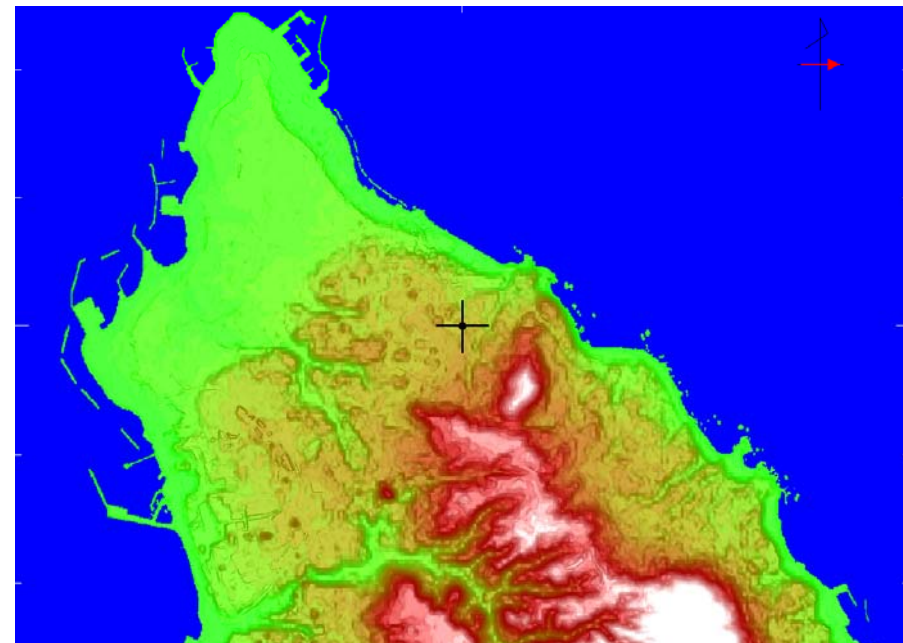


High Tree Height

木の高さは高い

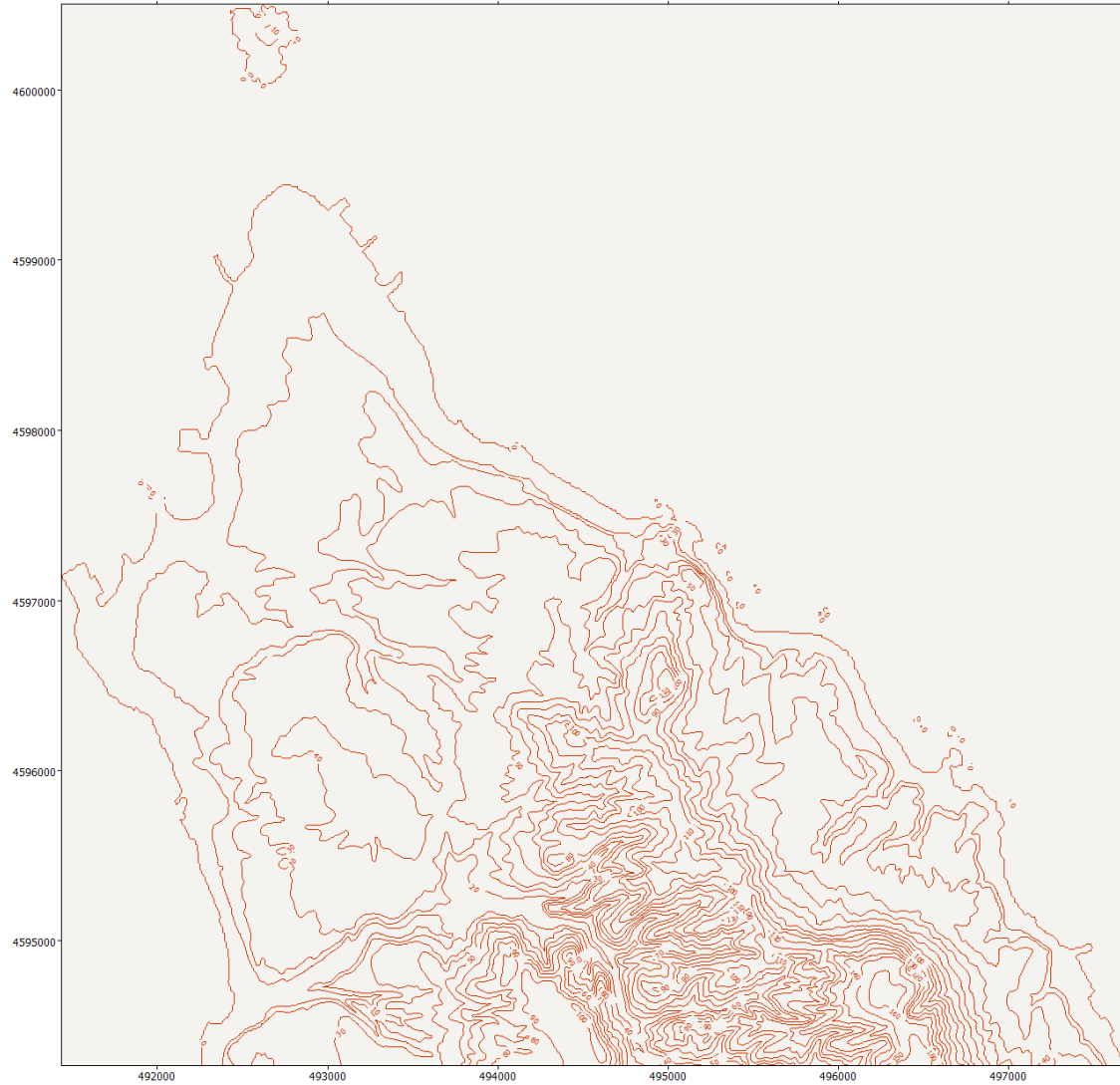


DEM10B + DEM5A








DEM Combined  
+ Tree Height  
DSM





WAsP Map File

	DEM 10B	DEM10B + DEM5A	DSM
RIAM- COMPACT			
MASCOT			
WAsP	